

Solutions for glass curtain wall applications

HOLOGRAPHIC INVISIBLE SCREEN

Series S



World's First LED Holographic
Invisible Display Technology



Spatial Floating Image



Rich and Delicate Color



Simple Installation and
Maintenance



Ultra-high Transparency



HD Display Quality



Series S

LED transparent display standard cabinet - a cost-effective customizable solution for glass curtain walls. The perfect design of the module with high transparency and high temperature resistance can achieve a visual transparency of more than 90%. It does not block light and view. Supports customization featuring modular components and effortless installation.

	Model	S3	S6	S10
	Display Dimension (mm) (w*h)	1000x1000	1000x1000	960x1000
	Profile Dimension (mm) (w*h)	1000x1000	1000x1000	960x1000
	Resolution (dot) (w*h)	256x256	160x160	96x100

Product Advantages



Customizable Cabinet

Modular design adapts to various glazing framework structures



Ultra-high Transparency

Visual transparency exceeding 92% with seamless full-screen invisibility



HD Display Quality

Horizontal and vertical pixels equal spacing, light/driver integrated, grayscale 16bit



Spatial Floating Image

3D holographic, spatial floating image



High Brightness and Contrast

High brightness 5000cd/m², High contrast ratio 9000:1

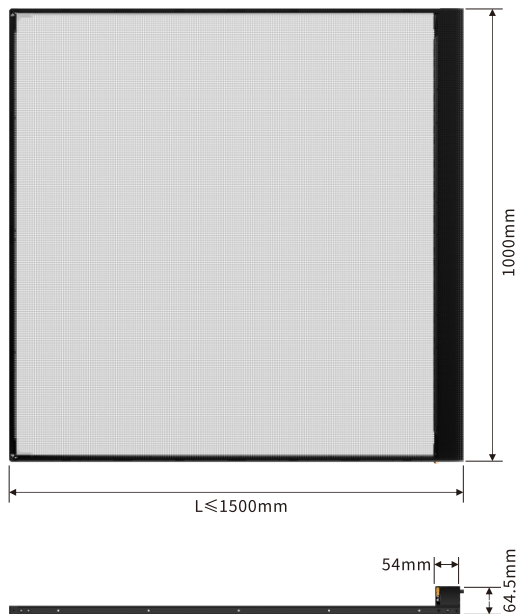


Suspended Mounting Method

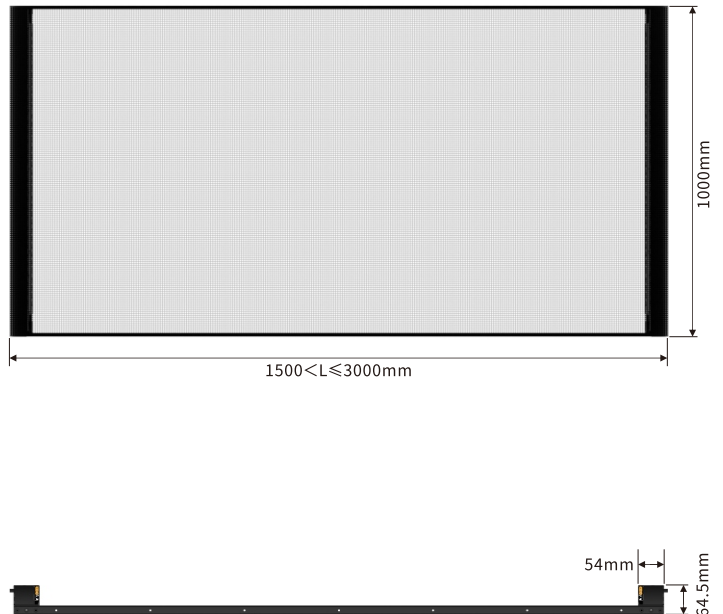
The cabinet is mounted onto the curtain wall framework via connecting plates

Custom cabinet dimension specifications

Single-sided power box dimensions

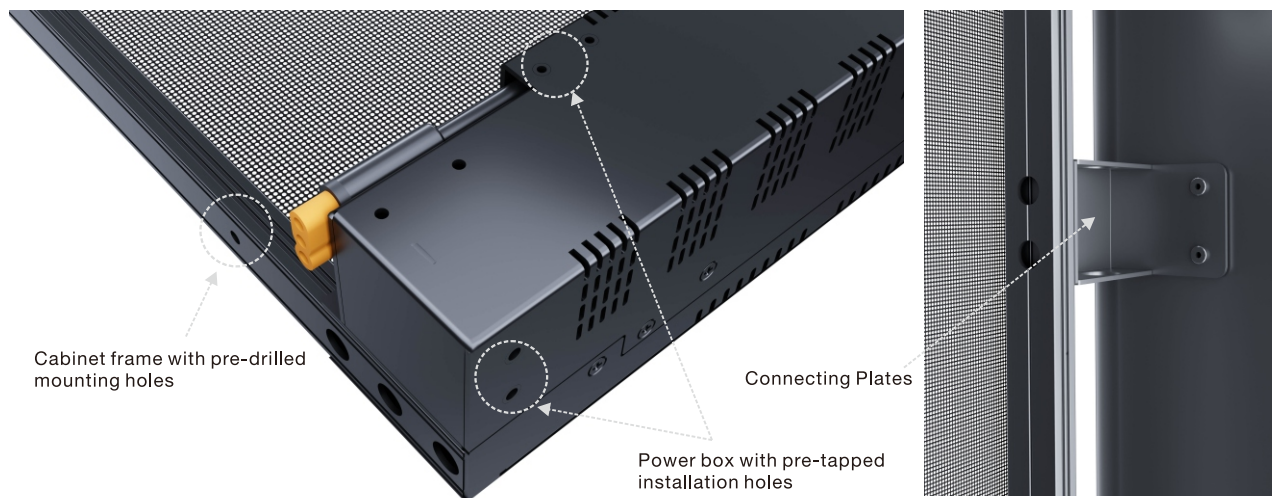


Dual-sided power box dimensions

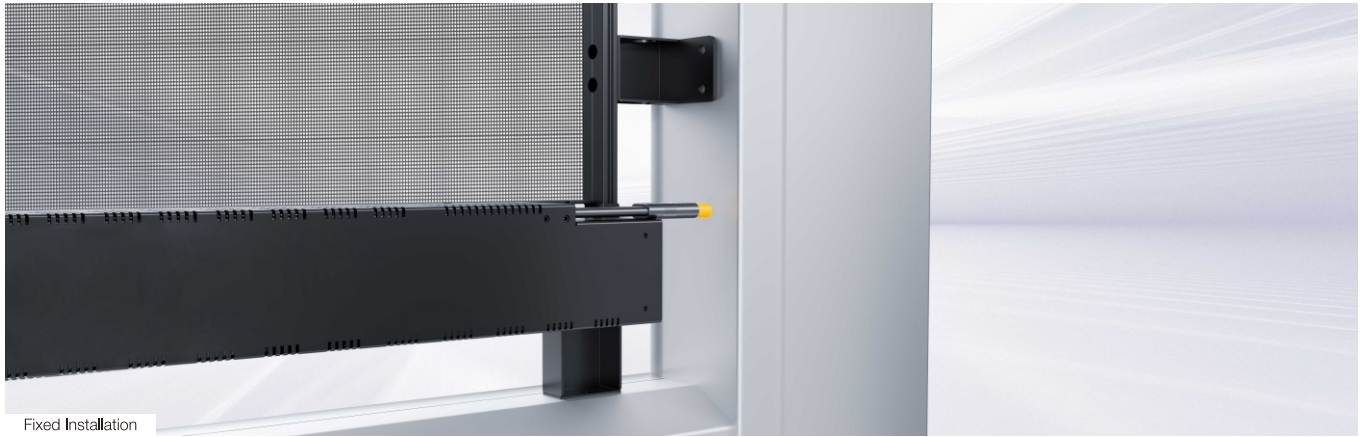


Cabinet mounting method

Fixed installation: Pre-drilled mounting holes on cabinet.
Secured to structural steel frame with self-tapping screws via connecting plates.



Installation



Fixed Installation

Specifications

Model	S3-1000*1000	S6-1000*1000	S10-1000*1000
LED Specification	2121	2121	2727
Pixel Pitch (mm)(horizontal / vertical)	3.91-3.91	6.25-6.25	10.0-10.0
Pixel Density(dot/m ²)	65536	25600	10000
Transparency Rate	92%	95%	95%
Display Dimension (mm) (w*h)	1000*1000	1000*1000	960*1000
Profile Dimension (mm) (w*h)	1000*1000	1000*1000	960*1000
Resolution (dot) (w*h)	256*256	160*160	96*100
Brightness(cd/m ²)	≥3000(White Body)	≥5000(White Body)	≥7000(White Body)
Maximum Power Consumption (w/m ²)	865	865	800
Average Power Consumption (w/m ²)	330	330	300
Weight(Kg/pcs)	6	6	8
Color Temperature(K)	3000~10000	3000~10000	3000~10000
Scanning Mode	Static Driving (Single Pixel Single Control)	Static Driving (Single Pixel Single Control)	Static Driving (Single Pixel Single Control)
Frame Rate(Hz)	60~120	60~120	60~120
Lifespan	≥100,000.00 hours	≥100,000.00 hours	≥100,000.00 hours
Pixel Configuration	16bit	16bit	16bit
Input Voltage	AC100~240V 50/60 Hz	AC100~240V 50/60 Hz	AC100~240V 50/60 Hz
Working Voltage for Module	DC 4.2V ± 0.2V	DC 4.2V ± 0.2V	DC 4.2V ± 0.2V
Working Temperature	Temperature -20°C~50°C	Temperature -20°C~50°C	Temperature -20°C~50°C
Working Humidity	Humidity: 20% -85% (Without Condensation)	Humidity: 20% -85% (Without Condensation)	Humidity: 20% -85% (Without Condensation)
Storage Temperature	Temperature -20°C~60°C	Temperature -20°C~60°C	Temperature -20°C~60°C
Storage Humidity	Humidity: 10% -85% (Without Condensation)	Humidity: 10% -85% (Without Condensation)	Humidity: 10% -85% (Without Condensation)
Protetion Degree	IP 20	IP 20	IP 20
Installation Method	Fixed Installation, Hanging Up	Fixed Installation, Hanging Up	Fixed Installation, Hanging Up
Installation Environment	Indoor	Indoor	Indoor
Maintenance Method	Back-side service access	Back-side service access	Back-side service access
Module Packing Specification (16pcs per box)(mm)	Single Cabinet Packaging	Single Cabinet Packaging	Single Cabinet Packaging
Power Box Packing Specification(30pcs per box)(mm)	L1000*W960*H55mm	L1000*W960*H55mm	L1000*W960*H55mm

Shenzhen MUXWAVE Technology Co., Ltd.

Office Add: 1st Floor, Building G, Guancheng Low Carbon Industrial Park,
Shangcun Community, Gongming Street, Guangming District, Shenzhen, P.R.China

☎ WhatsApp +8618124175690
info@muxwave.com www.muxwave.com



Facebook



Instagram



Linkedin



Tiktok



Twitter/X



Youtube