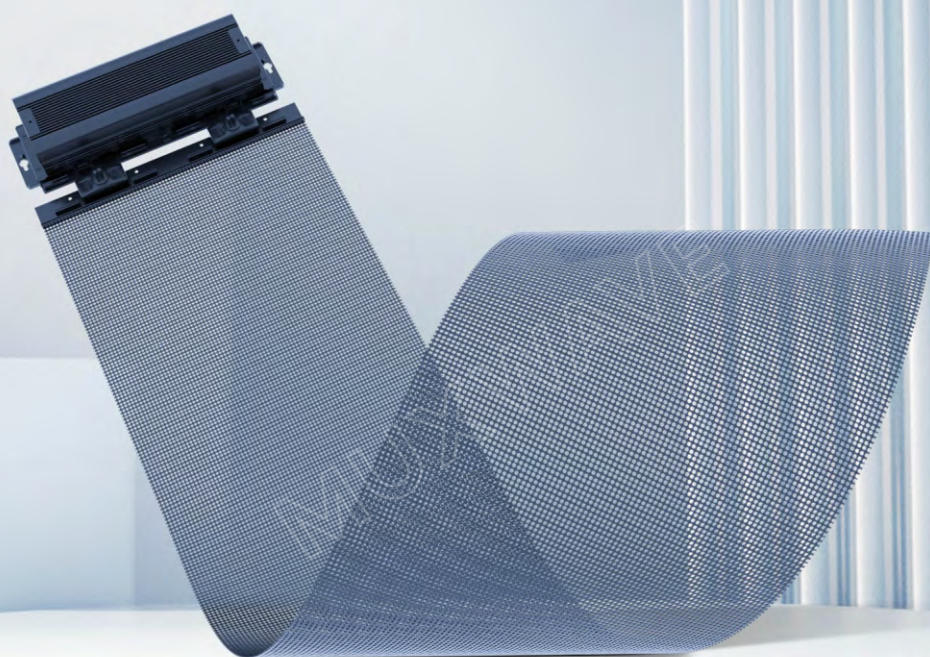


# Holographic Invisible Screen

Series M







### Transparent and invisible whole screen

The whole screen is transparent without frame; it is seamlessly spliced in a large area; the back side is invisible without floodlight.

### Holographic 3D suspension images

Display effect of 3D holographic and spatial suspension images.



### Transparent and excellent image quality

Equally spaced pixel layout for high-definition image quality; static scanning with combined diver board for table images; 16bit gray scale with exquisite colors.

### High brightness & high contrast

9,000:1 (high contrast), 5,000cd/m<sup>2</sup> (high brightness), dazzling and eye-catching.

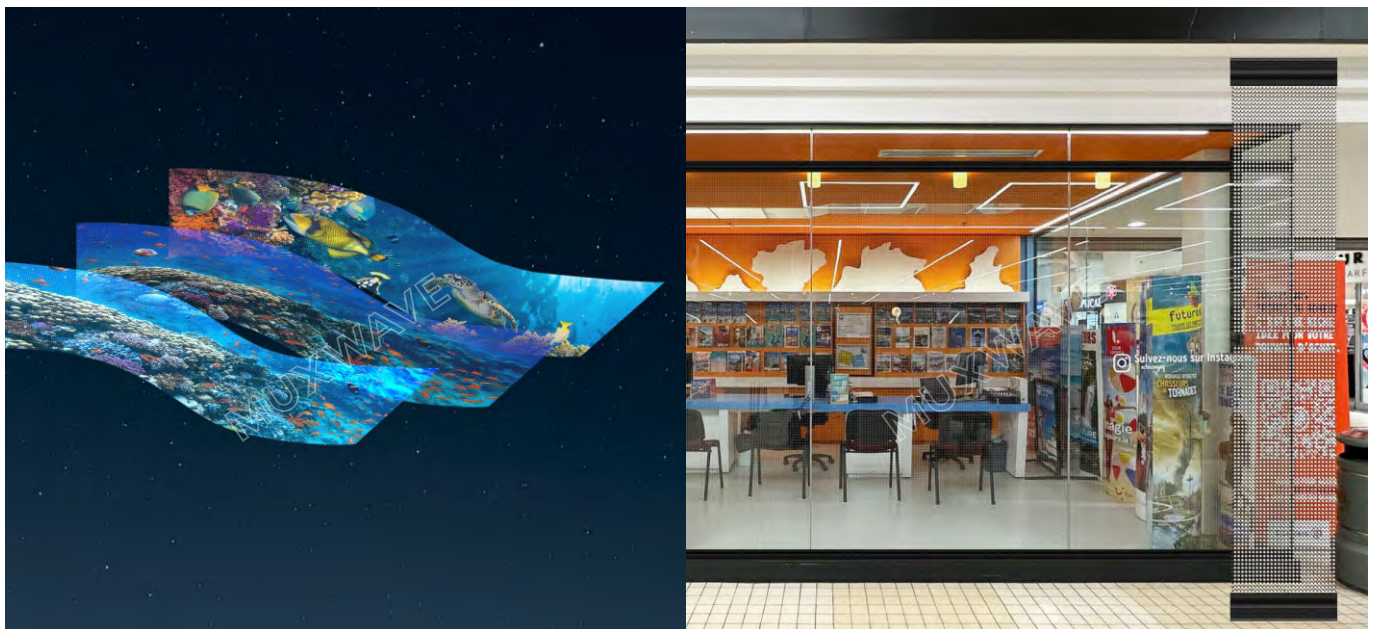


### Light weight of 6kg/m<sup>2</sup>

With professional aesthetic design, the display screen is lightweight and beautiful and weighs only 6kg/m<sup>2</sup>.

### As thin as 1.8mm

The thickness of the screen is less than 2mm, and it is seamlessly attached on a curved surface to show an integral whole on the transparent glass.



### Flexible

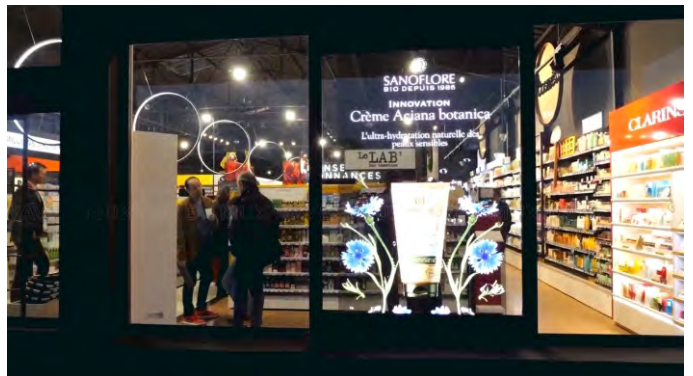
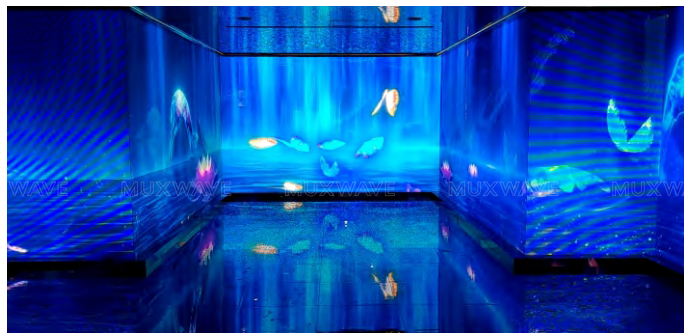
Standard module can be bent and skillful applications. It is the best partner of curved glass and irregular screens.

### Minimal installation and maintenance

The product is modular and can be directly attached to the front or back side of transparent glass without damaging the original structure of the building or affecting indoor lighting.

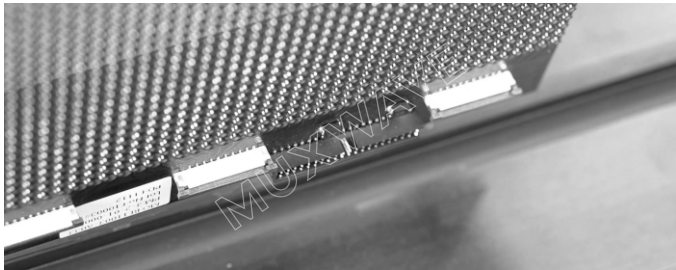
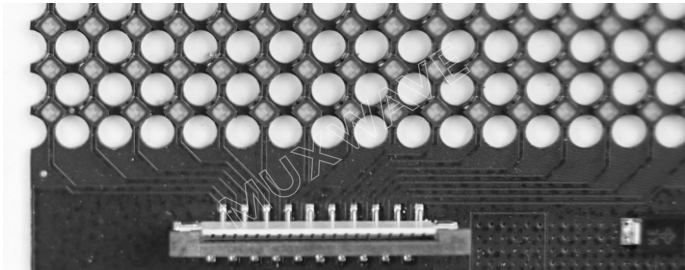
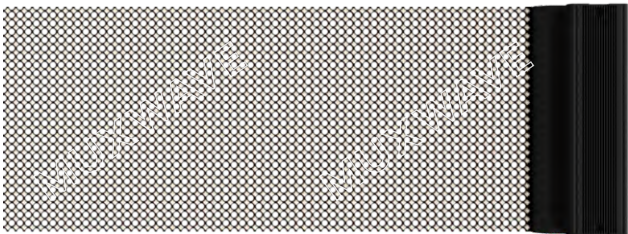


Muxwave holographic invisible screen products can realize different creative customized shapes such as flat and curved surfaces according to customer on-site needs, and can be widely used in commercial complex digital landscapes, airports, high-speed rail and subway station landmark digital landscapes, retail flagship store brand images, government And various occasions such as digital display in corporate exhibition halls, high-end brand exhibition halls, hotel creative applications, etc.



Holographic Invisible Screen • Series M

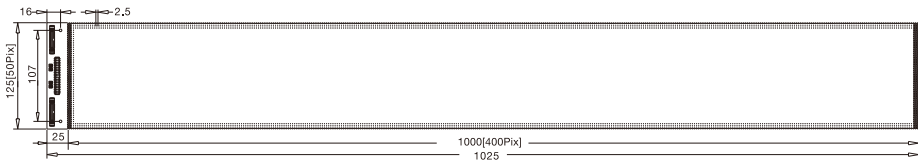
Ultra-clear and ultra-thin, high-transparency and high-temperature resistant high-end materials are used. The light board is perfectly designed to easily achieve a permeability of up to 80%. The overall mounting without a structural skeleton, the screen body can be spliced left and right, up and down, and can achieve a display height or width of 2.4-3 meters. Commercial window, glass curtain wall and other indoor and outdoor scenes.



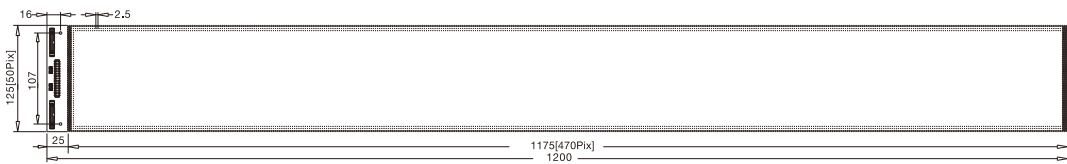
Holographic Invisible Screen • Series M2

P2.5 Regular Screen

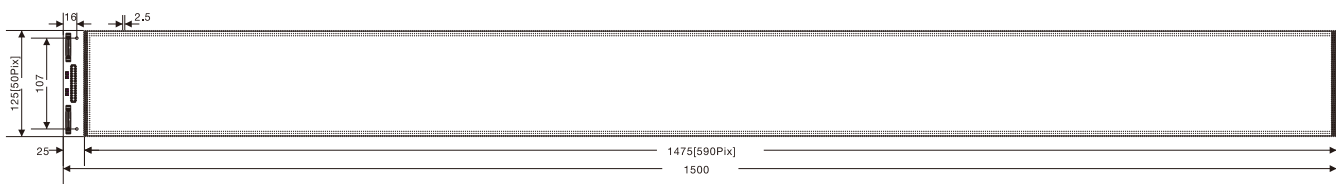
Module Dimension: 1025\*125mm      400\*50Pixel



Module Dimension: 1200\*125mm      470\*50Pixel



Module Dimension: 1500\*125mm      590\*50Pixel



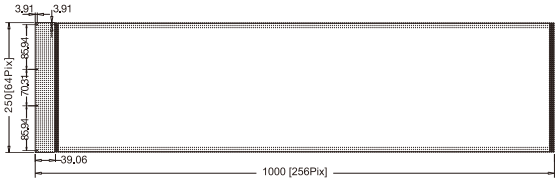


Holographic Invisible Screen · Series M3

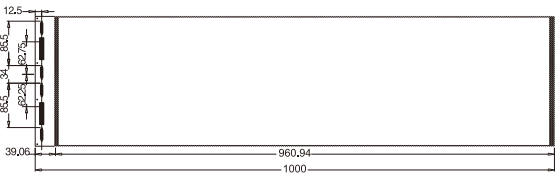
P3.9 Full Screen

Module Dimension  
1000\*250mm  
256\*64Pixel

Front View(Led Lamp Side)

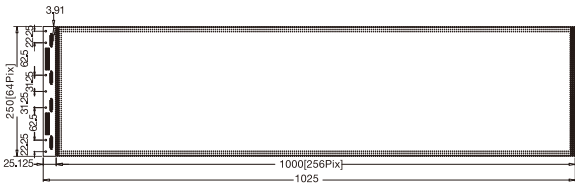


Back View(PCB Side)

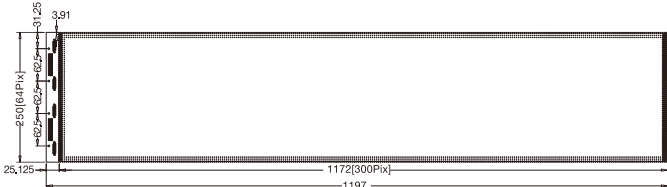


P3.9 Regular Screen

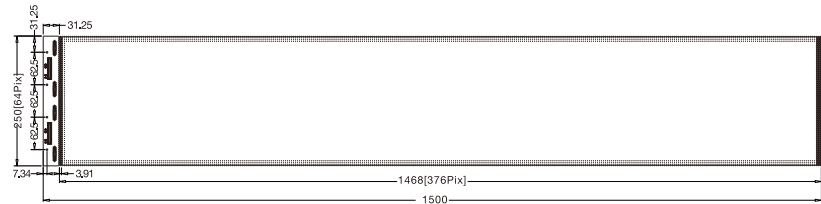
Module Dimension  
1025\*250mm  
256\*64Pixel



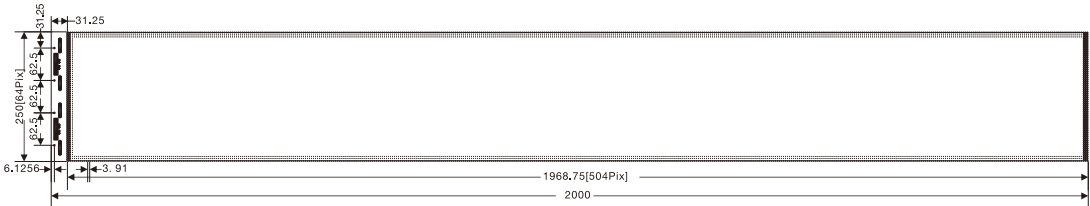
Module Dimension  
1197\*250mm  
300\*64Pixel



Module Dimension  
1500\*250mm  
376\*64Pixel



Module Dimension  
2000\*250mm  
504\*64Pixel



Holographic Invisible Screen · Series M6

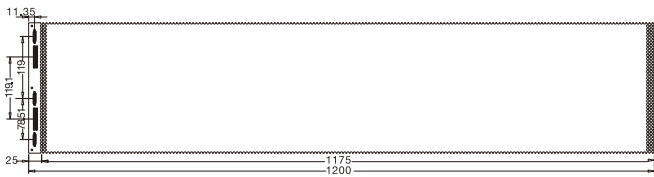
P6.25 Full Screen

Module Dimension  
1200\*250mm  
192\*40Pixel

Front View(Led Lamp Side)

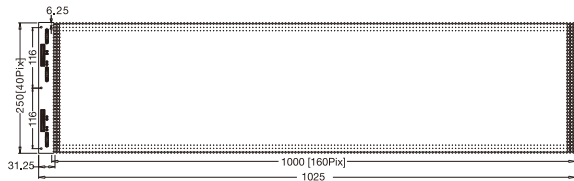


Back View(PCB Side)

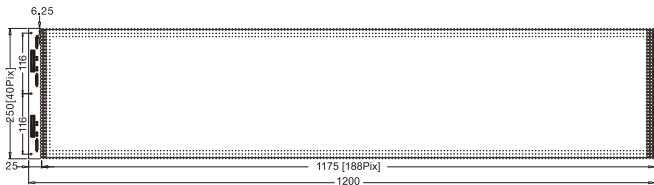


P6.25 Regular Screen

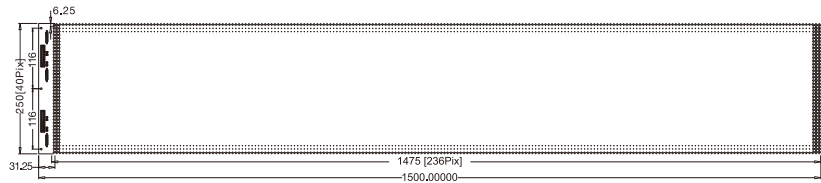
Module Dimension  
1025\*250mm  
160\*40Pixel



Module Dimension  
1200\*250mm  
188\*40Pixel



Module Dimension  
1500\*250mm  
236\*40Pixel

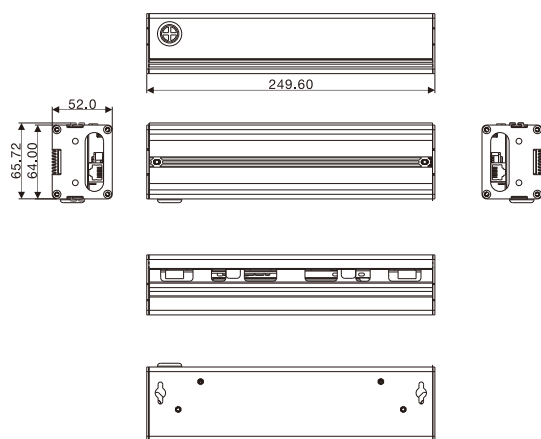


Module Dimension  
2000\*250mm  
316\*40Pixel



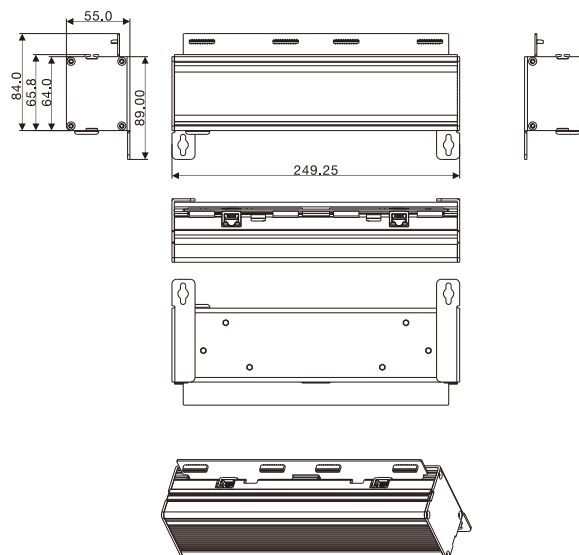
## Version A Power Box

1. The installation and fixing holes are inside the power box, before the installation and removal of the power box, the cover of the power box needed to be removed.



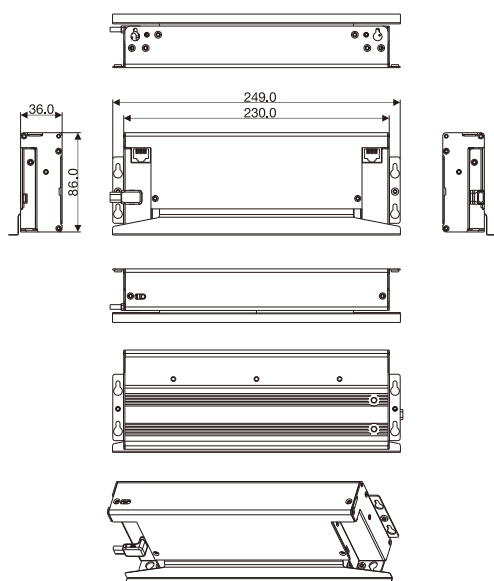
## Version B Power Box

1. The installation and fixing holes are outside the power box, and the installation and removal do not need to disassemble the power box cover.



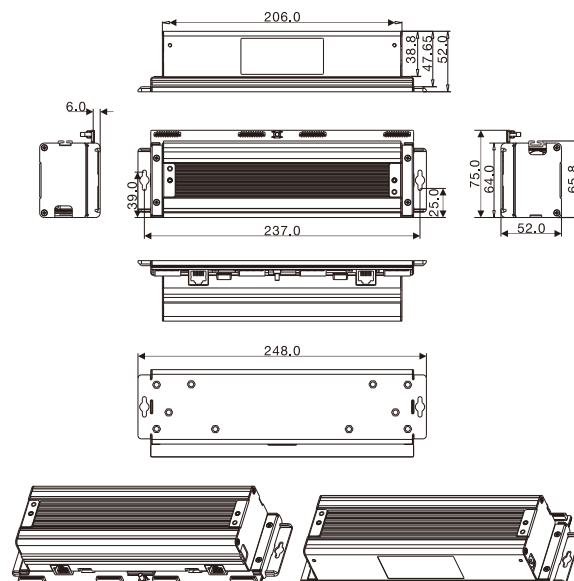
## Version C Power Box

1. The installation and fixing holes are outside the power box, and the installation and removal do not need to disassemble the power box cover;  
2. The FPC wiring scheme for the lamp board welding, the size is narrow.



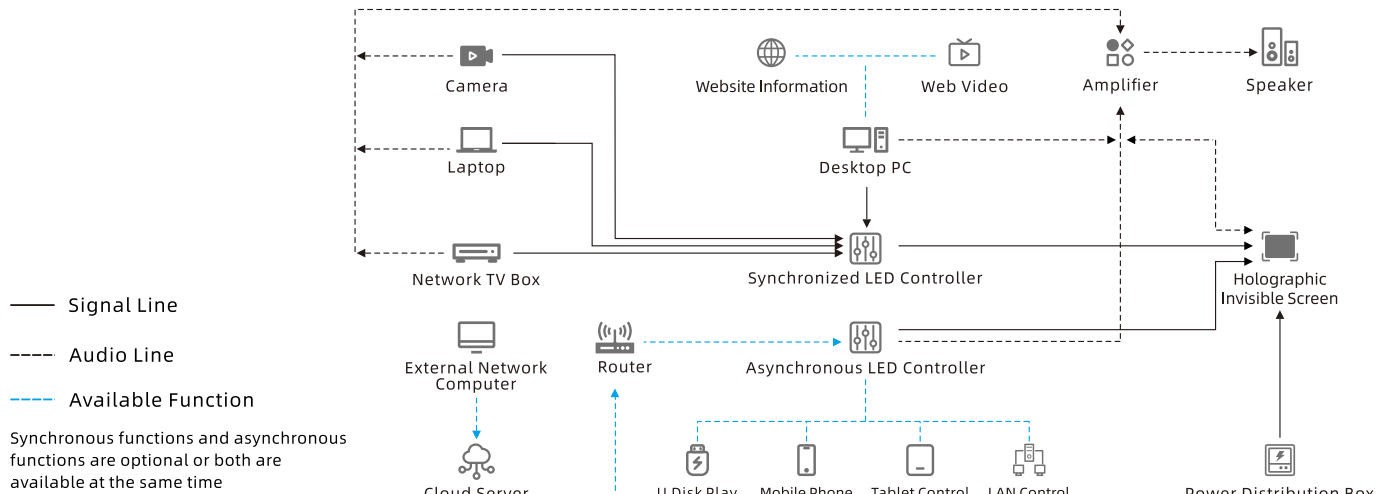
## Version D Power Box

1. When installed at the inner arc side, the corners of the power boxes don't need to be cut;  
2. Compared with Version B Power Boxes, the width of decoration of Version D will be 37mm shorter;  
3. There are spaces between the power boxes, hence make it easier to match and install them





## System Topology



## Specifications

Model	M2			M3				M6			
Display Dimension (mm) (w*h)	125x1000	125x1175	125x1475	250x1000	250x1172	250x1469	250x1969	250x1000	250x1175	250x1475	250x1975
Profile Dimension (mm) (w*h)	125x1025	125x1200	125x1500	250x1025	250x1197	250x1500	250x2000	250x1025	250x1200	250x1500	250x2000
Resolution (dot) (w*h)	50x400	50x470	50x590	64x256	64x300	64x376	64x504	40x160	40x188	40x236	40x316
LED Specification	1515			2121				2121			
Pixel Pitch (mm) (horizontal / vertical)	2.5-2.5			3.91-3.91				6.25-6.25			
Pixel Density (dot/m <sup>2</sup> )	160000			65536				25600			
Transparency Rate	85%			92%				95%			
Brightness (cd/m <sup>2</sup> )	≥1000 (Black Body)			≥3000 (Black Body) ≥4500 (White Body)		≥2000 (Black Body) ≥3000 (White Body)	≥1700 (Black Body) ≥2550 (White Body)	≥5000 (White Body)		≥4500 (White Body)	≥3000 (White Body)
Maximum Power Consumption (w/m <sup>2</sup> )	608	608	608	684 (Black Body) 577 (White Body)	684 (Black Body) 577 (White Body)	526 (Black Body) 414 (White Body)	520 (Black Body) 414 (White Body)	552	552	502	440
Average Power Consumption (w/m <sup>2</sup> )	244	244	244	274 (Black Body) 231 (White Body)	274 (Black Body) 231 (White Body)	211 (Black Body) 166 (White Body)	208 (Black Body) 177 (White Body)	221	221	201	176
Weight (Kg/pcs)	0.2	0.25	0.3	0.4	0.5	0.6	0.8	0.4	0.5	0.6	1
Power Box Weight (Kg/pcs)	Type B and D is 1.1kg			Type B and D is 1.1kg				Type B and D is 1.1kg			
Color Temperature (K)	3000~10000			3000~10000				3000~10000			
Scanning Mode	Light & Driver Integrated, Static Driving			Light & Driver Integrated, Static Driving				Light & Driver Integrated, Static Driving			
Frame Rate (Hz)	60~120			60~120				60~120			
Lifespan	≥100,000.00 hours			≥100,000.00 hours				≥100,000.00 hours			
Pixel Configuration	16bit			16bit				16bit			
Input Voltage	AC100~240V 50/60 Hz			AC100~240V 50/60 Hz				AC100~240V 50/60 Hz			
Working Voltage for Module	DC 4.2V ± 0.2V			DC 4.2V ± 0.2V				DC 4.2V ± 0.2V			
Working Temperature	Temperature -20°C~50°C			Temperature -20°C~50°C				Temperature -20°C~50°C			
Working Humidity	Humidity: 20%~85% (Without Condensation)			Humidity: 20%~85% (Without Condensation)				Humidity: 20%~85% (Without Condensation)			
Storage Temperature	Temperature -20°C~60°C			Temperature -20°C~60°C				Temperature -20°C~60°C			
Storage Humidity	Humidity: 10%~85% (Without Condensation)			Humidity: 10%~85% (Without Condensation)				Humidity: 10%~85% (Without Condensation)			
Protection Degree	IP 20			IP 20				IP 20			
Installation Method	PCB Side Glued			LED Side Glued, PCB Side Glued, Hanging Up				LED Side Glued, PCB Side Glued, Hanging Up			
Installation Environment	Indoor			Indoor				Indoor			
Module Packing Specification (16pcs per box)(mm)	L1295*W335*H270		L1570*W335*H270	L1295*W335*H270		L1570*W335*H270	L2085*W335*H270	L1295*W335*H270		L1570*W335*H270	L2085*W335*H270
Power Box Packing Specification (30pcs per box)(mm)	L1595*W335*H270			L1295*W335*H270				L1295*W335*H270			

Statement: The relevant parameters in the table are subject to real-time update, and the data is for reference only.  
Upgrade will be made without further notice.

### Shenzhen MUXWAVE Technology Co., Ltd.

Office Add: 1st Floor, Building G, Guancheng Low Carbon Industrial Park,  
Shangcun Community, Gongming Street, Guangming District, Shenzhen, P.R.China

WhatsApp +8618124175690  
info@muxwave.com www.muxwave.com

